

8 7 6 5 4 3 2 1

DO NOT SCALE
DIMENSIONS IN mm.

METRIC

3rd ANGLE PROJECTION

C 626 241

G

F

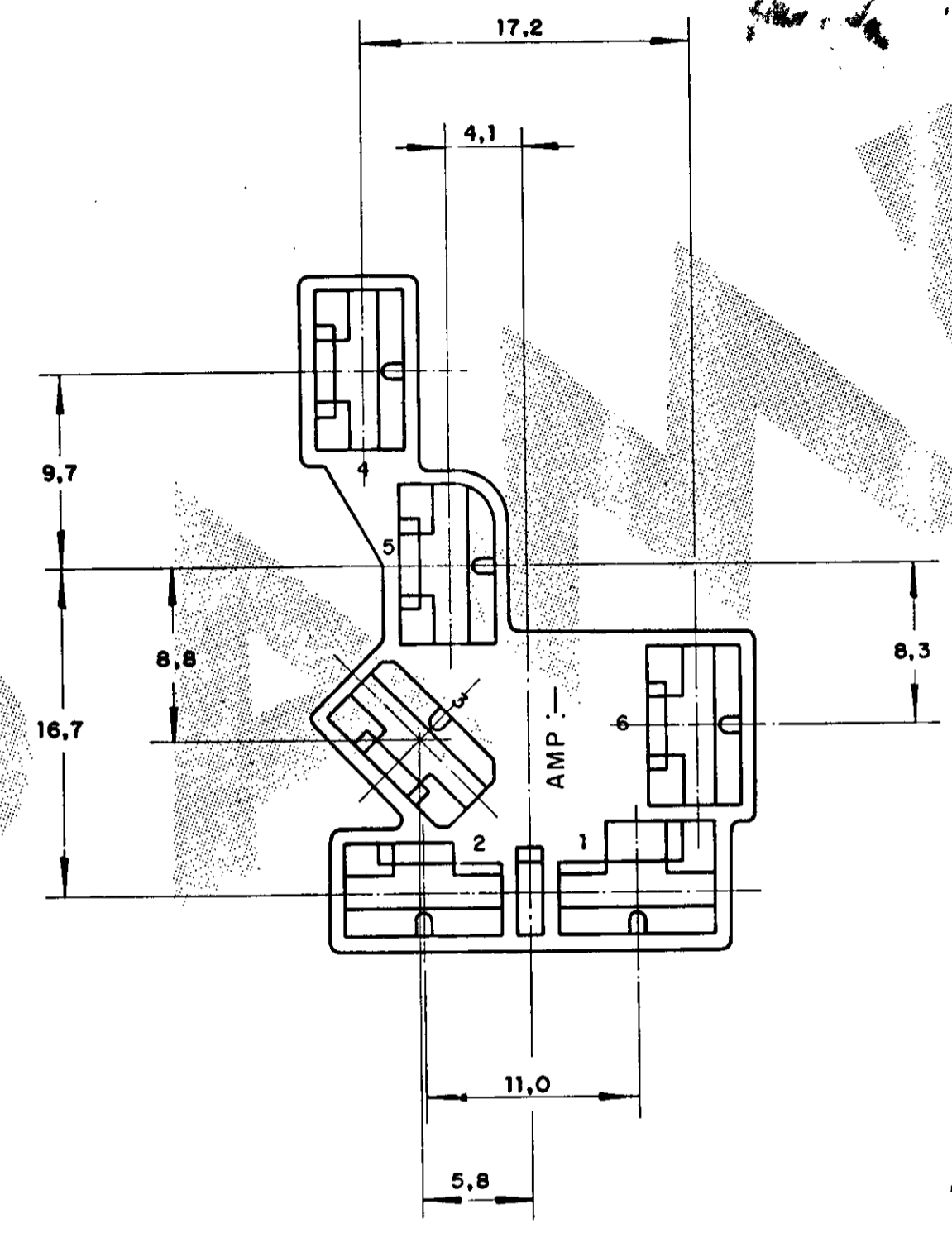
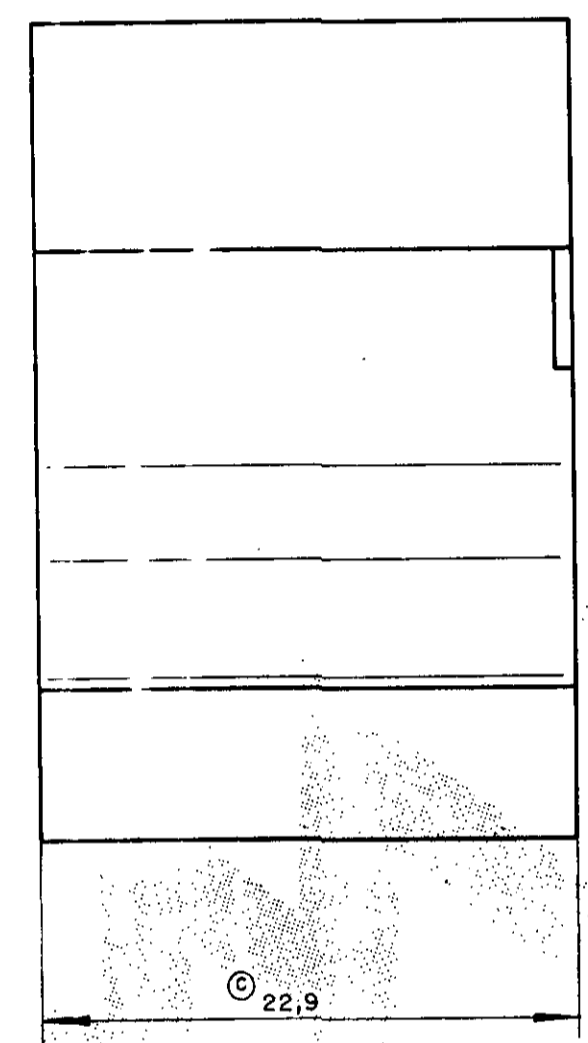
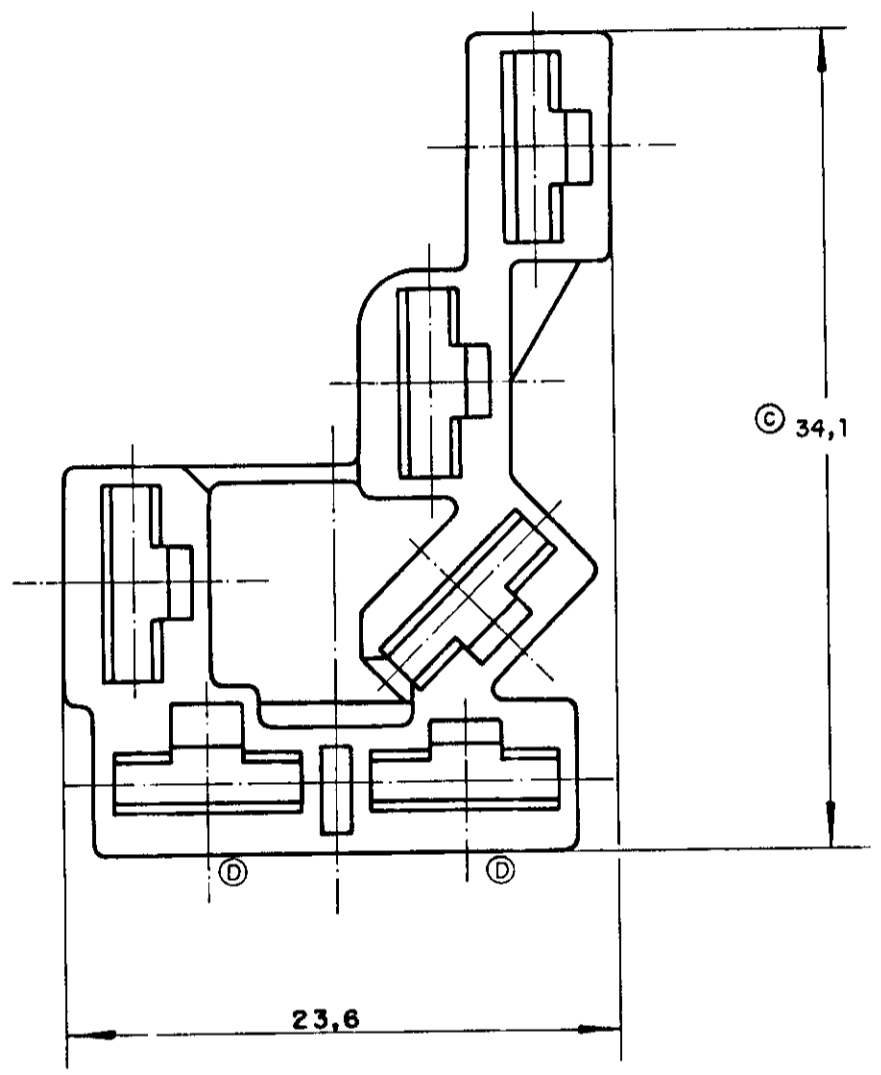
E

D

C

B

A



- ①- SEE RESTRICTED CUSTOMER DRAWING NUMBER 626241-1. ①- VER DESENHO RESTRITO 626241-1.
- ② OBSOLETE PARTS: OBSOLETE CIS STREAMLINING PER D.RENAUD/D.SINISI

② OBSOLETE	PRETO BLACK	P.A. 6.6	626 241 - 3
			① 626 241 - 2
			① 626 241 - 1
PART NUMBER V.W.	FINISH	MATERIAL	PART NUMBER
CUSTOMER DWG for REFERENCE ONLY		THIS DRAWING IS UNPUBLISHED RELEASED FOR PUBLICATION 19 C. COPYRIGHT 1983 BY AMP DO BRASIL LTDA. ALL INTERNATIONAL RIGHTS RESERVED AMP PRODUCTS MAY BE COVERED BY U.S. AND FOREIGN PATENTS AND/OR PATENTS PENDING.	
TOLERANCES UNLESS OTHERWISE STATED DEC. ±0,5 ANGLES ±1°		TMS DIA RANGE	WIRE RANGE
DR <i>J. Renaud</i> AUG. 18, 83		AMP do BRASIL LTDA. São Paulo, Brasil	
D1 REV PER ECO-09-026444	KK AEG 17DEC08	DESCRIPTION	
D REVISADO EC 415-95	M.R.B. <i>J.R.B.</i> NOV 95	6 WAY .250 FASTIN-ON REC. HSG	
C ERA 250 E 35,7 EON 3625	PF -- 07-01-93	A2 DWG NO C 626 241	
B REVISADO	G.F.M. T.A.B.V. 4.6.84	SHEET 1 OF 1	
A REDES. C/ MODIFICAÇÕES	G.F.M. T.A.B.V. 18.8.83		
ISS REVISION RECORD	DR CHK DATE APP.		